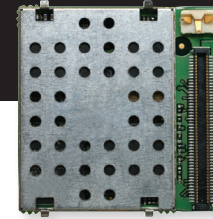




WHEN SMALL SIZE AND LOW POWER MATTER



(Actual size)

Core to all things Enfora – the GSM/GPRS/EDGE Low Power platforms deliver small size and industry leading high-performance driving the essential capabilities, mobile connectivity and device intelligence needed for today's demanding design-in and OEM markets.

The Enabler III is a certified dual and quad-band module family that supports GSM/GPRS/EDGE functionality in a small platform with unprecedented performance and reliability. The modular architecture, driving by a programmable rules engine, network router and control & automation capabilities provide manufactures with a flexible structural design for rapid product development and deployment.

The Enabler III platforms are part of Enfora's N4A Intelligent Device offering and feature superior performance in a small package with ultimate flexibility. Coupled with the robust N4A Communications and Management platform, devices can be provisioned, monitored and reconfigured remotely, most anywhere in the world. Driven by the N4A Services Architecture, Enfora delivers a flexible, modular architecture for development and deployment. Keeping you Connected to your business critical data Anywhere, Anytime.

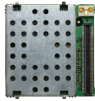
N4A Enabler III Embedded Module Benefits

- Utilizes leading-edge GSM/GPRS/EDGE silicon solutions from Texas Instruments
- BGA and multi-pin connector platforms
- Designed to integrate with Enfora's N4A Communications & Management software to quickly link to existing applications & services
- Supports essential features
 - Voice
 - SMS
 - Circuit-switched data
 - Packet Data Class 10
 - TCP/IP software stack w/- UDP (PAD)

Superior Performance, unprecedented reliability – Delivered through the N4A Enabler III Family

ENABLER III
GSM/GPRS/EDGE
QUAD-BAND OEM MODULES

**ENABLER IIIIG
DUAL-BAND**



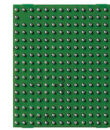
**ENABLER IIIIG
QUAD-BAND**



**ENABLER IIIIG-BGA
QUAD-BAND**



MODEL NUMBER	GSM0306	GSM0308	GSM0408																				
CHARACTERISTICS																							
Dimensions	28 x 27 x 2.5 mm	28 x 27 x 2.5 mm	28 x 24 x 3.0* mm <i>*Nominal Thickness (Includes BGA Ball) Before Reflow</i>																				
Weight	<3.6 g	<4.2 g w/ SIM carrier /<3.6 g w/o SIM carrier	< 3.6 g																				
RF connector	Board-to-board compressor	MCD coaxial or board-to-board compressor																					
Main Connector	Molex 0.4 mm Slim Stack (1.5 mm matting height)	Molex 0.4 mm Slim Stack (1.5 mm mating height)	167 Pin BGA (includes RF)																				
RADIO PERFORMANCE																							
Frequency (MHz)	900/1800	850/900/1800/1900																					
Sensitivity	-106 dBm (typical)	-106 dBm (typical)																					
Transmit power	Class 4 (2W@850/900 MHz) Class 1 (1W@1800/1900 MHz)	Class 4 (2W@850/900 MHz) Class 1 (1W@1800/1900 MHz)																					
GPRS PACKET DATA	Mode: Class B, Multislot 10 Protocol: GSM/GPRS Rel 97, AMR Rel 99 Coding schemes: CS1-CS4 Packet channel: PBCCH/PCCCH																						
GSM FUNCTIONALITY	Voice: FR, EFR, HR & AMR CS data: Asynchronous; Transparent and Non-Transparent up to 14.4 kb GSM SMS: Text, PDU, MO/MT, Cell Broadcast																						
SIM ACCESS																							
Remote SIM	1.8/3V SIM		1.8/3V SIM																				
Optional integrated SIM carrier	Yes		No																				
INTERFACE																							
Host protocols	AT commands, UDP API, CMUX, PPP		AT commands, UDP API, CMUX, PPP																				
Internal protocols	PPP, UDP API, TCP API, UDP and TCP (PAD)		PPP, UDP API, TCP API, UDP and TCP (PAD)																				
API control/status	AT commands, UDP API, TCP API, AT commands over SMS		AT commands, UDP API, TCP API, AT commands over SMS																				
Physical interface	UART, USB		UART, USB																				
Peripheral interface	8 programmable I/O (expandable to 20), 1 analog input, 3 audio (1 digital audio)		UP to 20 programmable I/O (includes keypad), 3 analog input, 4 audio (2 digital audio) plus speaker, 2 LCD, camera, battery charger																				
ENVIRONMENT	Operating: -30°C to 85°C Compliant: -20°C to 60°C Storage: -40°C to 85°C Humidity: Up to 95% non-condensing																						
POWER	3.3 to 4.5 V																						
DC voltage																							
GSM operating power (typical)	<table border="1"> <thead> <tr> <th>Band</th> <th>Mode</th> <th>Avg (mA)</th> <th>Peak A</th> </tr> </thead> <tbody> <tr> <td>GSM 850/900</td> <td>1TX/1RX</td> <td>250</td> <td>1.6</td> </tr> <tr> <td>GSM1800/1900</td> <td>1TX/1RX</td> <td>215</td> <td>1.3</td> </tr> <tr> <td></td> <td>Idle</td> <td><2.5 DRX 5</td> <td></td> </tr> <tr> <td></td> <td>Sleep</td> <td>600 µA</td> <td></td> </tr> </tbody> </table>			Band	Mode	Avg (mA)	Peak A	GSM 850/900	1TX/1RX	250	1.6	GSM1800/1900	1TX/1RX	215	1.3		Idle	<2.5 DRX 5			Sleep	600 µA	
Band	Mode	Avg (mA)	Peak A																				
GSM 850/900	1TX/1RX	250	1.6																				
GSM1800/1900	1TX/1RX	215	1.3																				
	Idle	<2.5 DRX 5																					
	Sleep	600 µA																					
CERTIFICATIONS																							
FCC	N/A	Parts 15, 22 & 24																					
GCF	Version 3.27.0	Version 3.27.0																					
PTCRB	N/A	Version 3.12.0																					
CE Mark	Yes	Yes																					
Industry Canada	N/A	Yes																					
RoHS Compliant	Yes	Yes																					
PART NUMBERS																							
Without SIM carrier	GSM0306-10 (B2B RF) GSM0306-70 (Micro coaxial)	GSM0308-10 (B2B RF) GSM0308-70 (Micro coaxial)	GSM0408-40																				
With SIM carrier	GSM0306-11 (B2B RF) GSM0306-71 (Micro coaxial)	GSM0308-11 (B2B RF) GSM0308-71 (Micro coaxial)																					

**ENABLER IIIE
QUAD-BAND****ENABLER IIIE-BGA
QUAD-BAND**

MODEL NUMBER	EDG0308	EDG0408																				
CHARACTERISTICS																						
Dimensions	34 x 28 x 2.5 mm	33 x 28 x 3.3* mm <i>*Nominal Thickness (Includes BGA Ball) Before Reflow</i>																				
Weight	< 5.6 g w/ SIM carrier/ < 4.7g w/o SIM carrier	< 5.8 g																				
RF connector	Board-to-board compressor or MCD coaxial																					
Main Connector	Molex 0.4 mm Slim Stack (1.5 mm matting height)	223 pin BGA (includes RF)																				
RADIO PERFORMANCE																						
Frequency (MHz)	850/900/1800/1900																					
Sensitivity	-106 dBm (typical)																					
Transmit power	Class 4 (2W@850/900 MHz) Class 1 (1W@1800/1900 MHz)																					
GPRS PACKET DATA																						
Mode	Class B, Multislot 10																					
Protocol	GSM/GPRS/EDGE/AMR Rel 99																					
Coding schemes	CS1-CS4, MCS1-MCS9																					
Packet channel	PBCCH/PCCCH																					
GSM FUNCTIONALITY																						
Voice	FR, EFR, HR & AMR																					
CS data	Asynchronous; Transparent and Non-Transparent up to 14.4 kb																					
GSM SMS	Text, PDU, MO/MT, Cell Broadcast																					
SIM ACCESS																						
Remote SIM	1.8/3V SIM	1.8/3V SIM																				
Optional integrated SIM carrier	Yes	No																				
INTERFACE																						
Host protocols	AT commands, CMUX, PPP																					
Internal protocols	PPP																					
API control/status	AT commands																					
Physical interface	Serial 16550, USB 2.0																					
Peripheral interface	8 programmable I/O, 1 analog inputs 3 audio (1 digital audio)																					
ENVIRONMENT																						
Operating	-30°C to 85°C																					
Compliant	-20°C to 60°C																					
Storage	-40°C to 85°C																					
Humidity	Up to 95% non-condensing																					
POWER																						
DC voltage	3.3 to 4.5 V																					
GSM operating power (typical)	<table border="1"> <thead> <tr> <th>Band</th> <th>Mode</th> <th>Avg (mA)</th> <th>Peak A</th> </tr> </thead> <tbody> <tr> <td>GSM 850/900</td> <td>1TX/1RX</td> <td>250</td> <td>1.6</td> </tr> <tr> <td>GSM 1800/1900</td> <td>1TX/1RX</td> <td>215</td> <td>1.3</td> </tr> <tr> <td></td> <td>Idle</td> <td><2.5 DRX 5</td> <td></td> </tr> <tr> <td></td> <td>Sleep</td> <td>600 µA</td> <td></td> </tr> </tbody> </table>		Band	Mode	Avg (mA)	Peak A	GSM 850/900	1TX/1RX	250	1.6	GSM 1800/1900	1TX/1RX	215	1.3		Idle	<2.5 DRX 5			Sleep	600 µA	
Band	Mode	Avg (mA)	Peak A																			
GSM 850/900	1TX/1RX	250	1.6																			
GSM 1800/1900	1TX/1RX	215	1.3																			
	Idle	<2.5 DRX 5																				
	Sleep	600 µA																				
CERTIFICATIONS																						
FCC	Parts 15, 22 & 24	Parts 15, 22 & 24																				
GCF	Version 3.27.0	Version 3.27.0																				
PTCRB	Version 3.12.0	Version 3.12.0																				
CE Mark	Yes	Yes																				
Industry Canada	Yes	Yes																				
RoHS Compliant	Yes	Yes																				
PART NUMBERS																						
Without SIM carrier	EDG0308-10 (B2B RF) EDG0308-70 (Micro coaxial)	EDG0408-40																				
With SIM carrier	EDG0308-11 (B2B RF) EDG0308-71 (Micro coaxial)																					

